



perform[®] panel

Today's alternative to tiles

2022 Collections

07

Origins
Collection



09

Harmony
Collection



11

Elegance
Collection



13

Flooring
Collection



03 — Perform Panel Overview

07 — Origins Collection

09 — Harmony Collection

11 — Elegance Collection

13 — Flooring Collection

15 — Product Specification

17 — Nu-Lock
— Trims
— Ancillary Products

19 — Manufacturing

Contents

No other panel performs like Perform Panel

With easy installation, no grouting and a unique high-performance fitting system, **Perform Panel** gives you a seamless waterproof wall in a fraction of the time it would take to tile.

Available in a large selection of stylish designs across three core ranges, Perform Panel works with any interior scheme. Made in the UK, by a family firm trusted by the building industry for over **160 years**.



Five times faster than tiles to install



Save time & money with Perform Panel



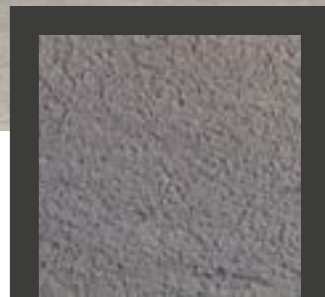
Seamless finish for easy cleaning



Backed by a 35 year guarantee



Design without borders



Ardesia
The Elegance Collection

A wall for every project

Perform Panel works beautifully for bathrooms - and many other applications - whatever the interior design style. From warm, gentle earth tones to bold urban design, our range includes a full spectrum of colour and texture. With Perform Panel you can get the look that's perfect for your project, in a fraction of the time it takes to tile.

Our three core ranges comprise over **48 stylish designs** in a wide choice of finish, colour, pattern and price-point.

Ideal for a whole range of applications

Because **Perform Panel** is five times quicker to fit than tiling, large-scale, time-critical projects really benefit. Social housing, modular buildings, student accommodation and nursing homes are just some of the areas where using Perform Panel pays off. And it's not just bathrooms - Perform Panel is ideal for hotels, gyms, showrooms, restaurants, shops and many more environments.

[Click here](#) to request free samples

Select five samples free of charge and we'll deliver them to your door.



Stratus Marble
The Origins Collection

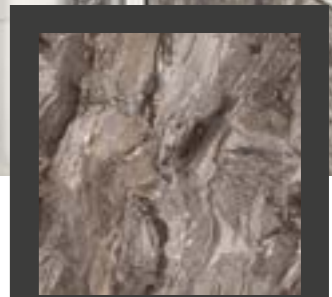
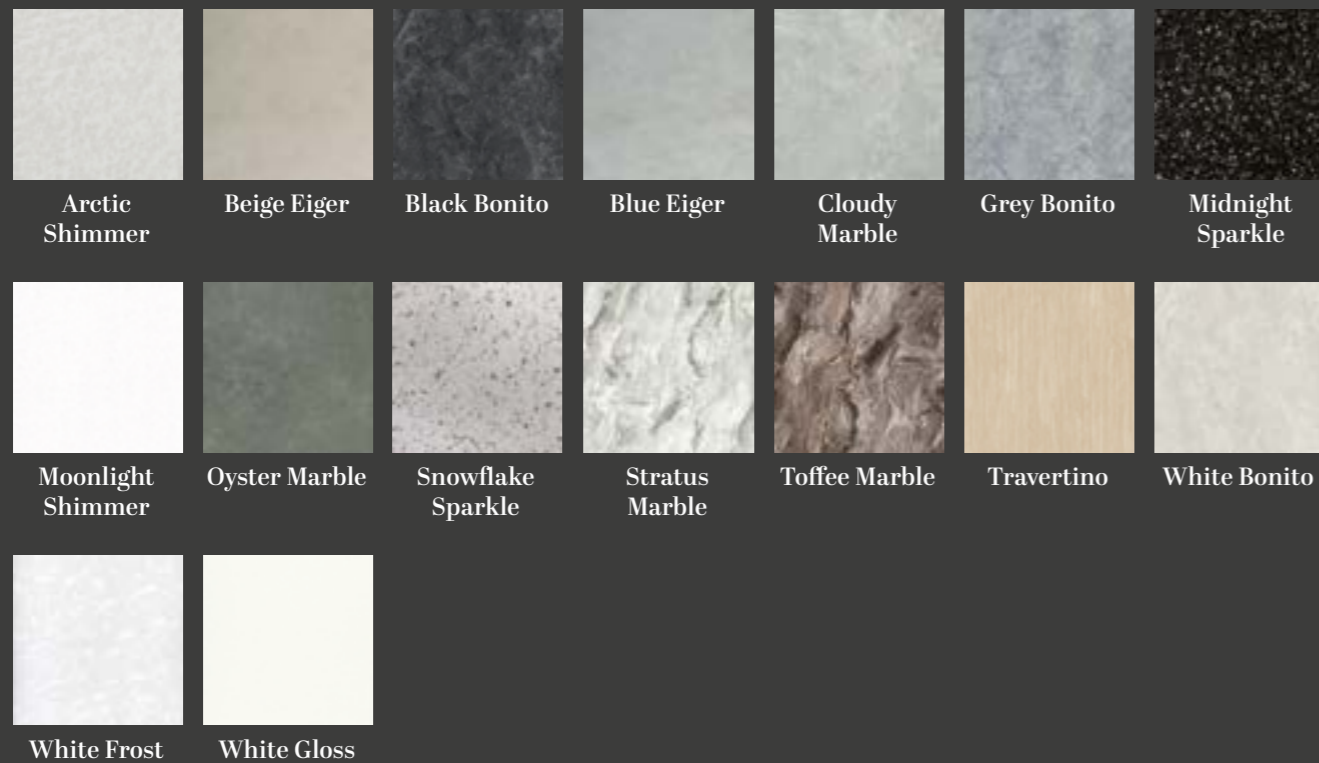
Overview

Origins

Wide-ranging | Hard-wearing | Ultra-modern

The Origins Collection

Where the **Perform Panel** story begins. Striking, contemporary designs and exceptional performance in a range of gloss high-pressure laminate panels. A spectrum of colour from bright, light hues to rich, deep tones. All available as **made-to-measure** panels or cost-effective standard sizes.



Toffee Marble
The Origins Collection

Collection

Harmony

Simple | Classic | Understated Elegance

The Harmony Collection

Classic colours and seductive textures combine in a collection that adds luxury to any project. The **Harmony Collection** includes designs ranging from understated elegance to glamorous, boutique-hotel chic.



Clear Splendour
The Harmony Collection

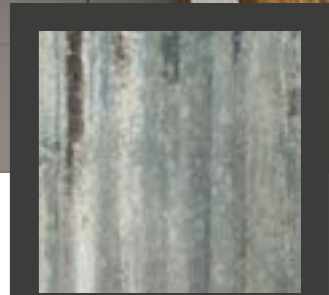
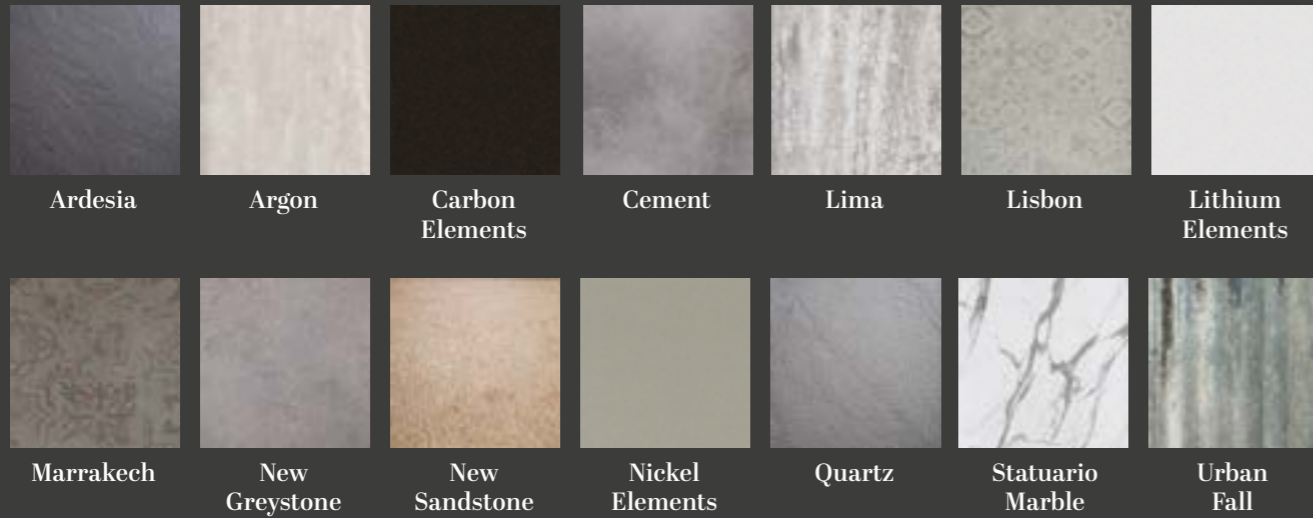
Collection

Elegance

Warm | Natural | Unmistakeable Luxury

The Elegance Collection

Adding **unmistakeable luxury** to the performance and practicality of **Perform Panel**, our Elegance Collection focuses on warm, natural colours and textures, creating an oasis of calm within the modern home.



Urban Fall
The Elegance Collection

Collection

Flooring

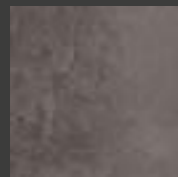
Perform Flooring comes in twelve stylish designs, to complement any interior design scheme. Choose a timber, marble or ceramic finish, in tile, wide-plank or narrow-plank format. Combining the durability and lightness of vinyl with the look of traditional materials.

Flooring sizes:

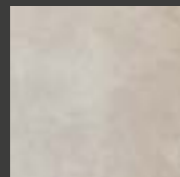
Tile - 457 x 300 (1.37m² per pack)

Narrow - 1220 x 176 (1.71m² per pack)

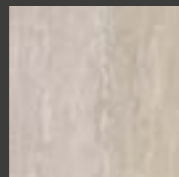
Wide - 1500 x 220 (1.98m² per pack)



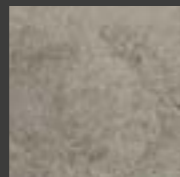
**Aegean Brown
Marble**
(Tile)



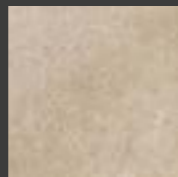
**Dark
Travertine**
(Tile)



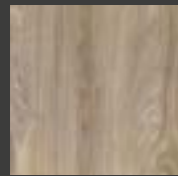
**Autumn
Sunstone**
(Tile)



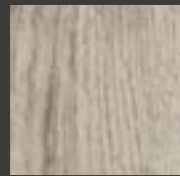
**Rustic
Clay**
(Tile)



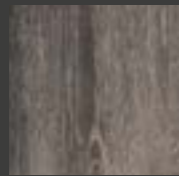
**Oyster
Beige**
(Tile)



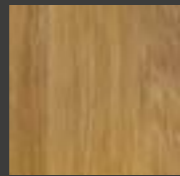
**Natural
Oak**
(Narrow)



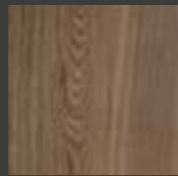
**Weathered
Driftwood**
(Narrow)



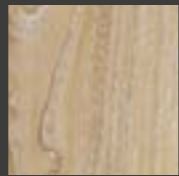
**Antique
Oak**
(Narrow)



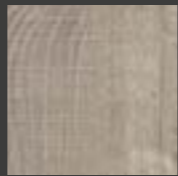
**Warm
Mahogany**
(Narrow)



**Dark
Mocha**
(Narrow)



**Light
Chestnut**
(Wide)



**Classic
Nutwood**
(Wide)



**Built on
Imm underlay**



**Designed
to Last**



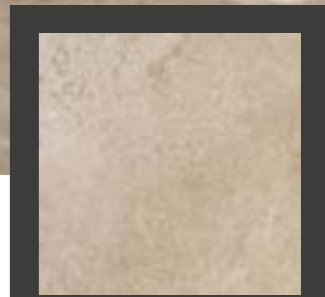
**Seamless
installation**



**Guaranteed
performance**



**Fit in a fraction
of the time**



Oyster Beige
Perform Flooring

Collection

Product Specification

Perform Panel products are manufactured using either a 5-layer plywood core or a moisture resistant MDF. The boards are bonded to HPL (High-Pressure Laminate) to the front face and a backing HPL to reverse. Suitable as shower panels or for wet rooms and other areas with extremely high humidity.

Where the long edges of the panels are supplied with the **Nu-Lock** tongue and groove click system, certified 7-layer birch plywood is used as the core substrate.

High-Pressure Laminate

Paper forms the basis of High-Pressure Laminates. The paper is impregnated with phenolic and melamine resins, dried and compressed to form a hard-wearing, stable coating. The laminate can be bonded to various substances and is resistant to most chemicals.

Finishes

Perform Panel is available in a selection of different finishes, depending on the selected decor. These include gloss, matt and textured finishes.

Supplied in an 11mm thickness, with three standard sizes, in either a moisture resistant MDF or a WBP plywood core.

2400 x 600mm

Plywood Weight	12kg
Moisture Resistant MDF Weight	13kg

2400 x 900mm

Plywood Weight	18kg
Moisture Resistant MDF Weight	20kg

2400 x 1200mm

Plywood Weight	24kg
Moisture Resistant MDF Weight	26kg

Perform Panel can also be cut to specific sizes to suit the customers' requirements. Please get in touch if you wish to enquire about a custom size.

TOLERANCES

Length	+/- 1.5mm
Width	+/- 0.5mm
Thickness	+/- 0.5mm
Difference from level	+/- 0.2mm
Curving Convex	1.00mm
Curving Concave	2mm



Specification

Nu-Lock. Just click to fit

Our unique **Nu-Lock tongue-and-groove** click system gives you a seamless, practically invisible finish, a major improvement on the traditional straight joint profile.

The **Nu-Lock system** is available in every one of our designs. While accuracy of pattern alignment is dependent on scale of pattern, Nu-Lock will ensure fast and seamless results that last a lifetime, when fitting our waterproof wall panels.

Please note that due to the machining process, Nu-Lock panels have a slightly reduced face size. Working sizes are as follows:

2400 x 580mm

2400 x 880mm

2400 x 1180mm

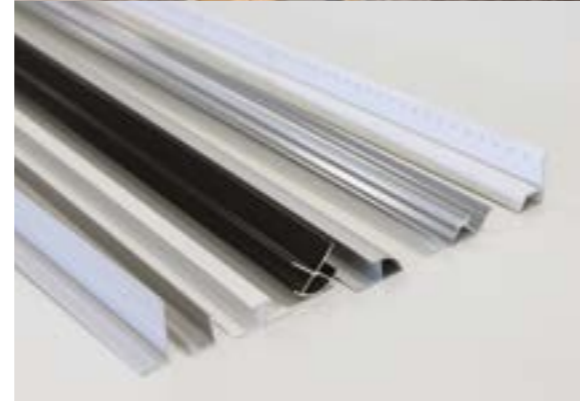
Trims

The perfect panel deserves the perfect trim. Seal and finish edges and joints with our range of wall panel trims, available in a variety of colours including; satin anodised aluminium, white, chrome, black or colour-match for an invisible finish. Trim samples can be requested as part of a 'trim bundle,' either in standard or colour.

[Click here](#) to check out the full range of trims today

Adhesive and silicone

Our own brand adhesive and silicone sealant have been developed specifically to ensure optimum performance with our panels and trims. Colour matched silicone is available, subject to a minimum order.



Nu-Lock

& Trims

Just 160 years to bring you tomorrow's bathroom wall

Backed by a family firm that's been serving the UK building industry since 1860, we strive for quality and safety when manufacturing every panel, in our state-of-the-art production facility, and have achieved **ISO 90001:2015 accreditation**.

With a vast range of experience in delivering products for multiple sectors, we take pride in our customer service and will guide you through the process to ensure you receive what is right for your specification and requirements.

[Click here](#) to download our install guides today



Manufacturing



Harmony Collection Cabana Wood



Flooring Collection Weathered Driftwood



Origins Collection Travertino



Elegance Collection Lima



Today's alternative to tiles

Aberdeen

25 Silverburn Crescent,
Bridge of Don Industrial Estate,
Aberdeen AB23 8EW

Birmingham

Unit 28 Elmdon Trading Estate,
Marston Green,
Birmingham B37 7HE

+44 (0)1224 823 000

info@performpanel.co.uk

performpanel.co.uk

